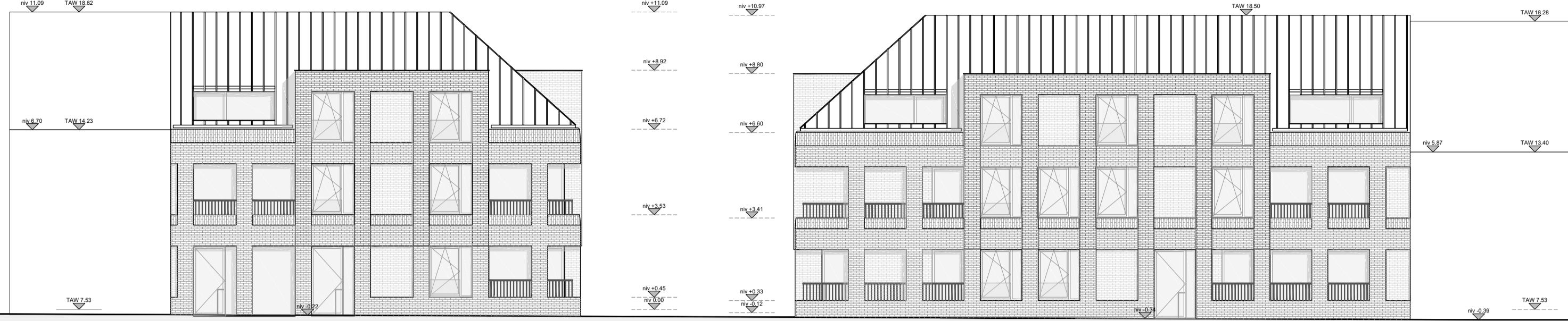
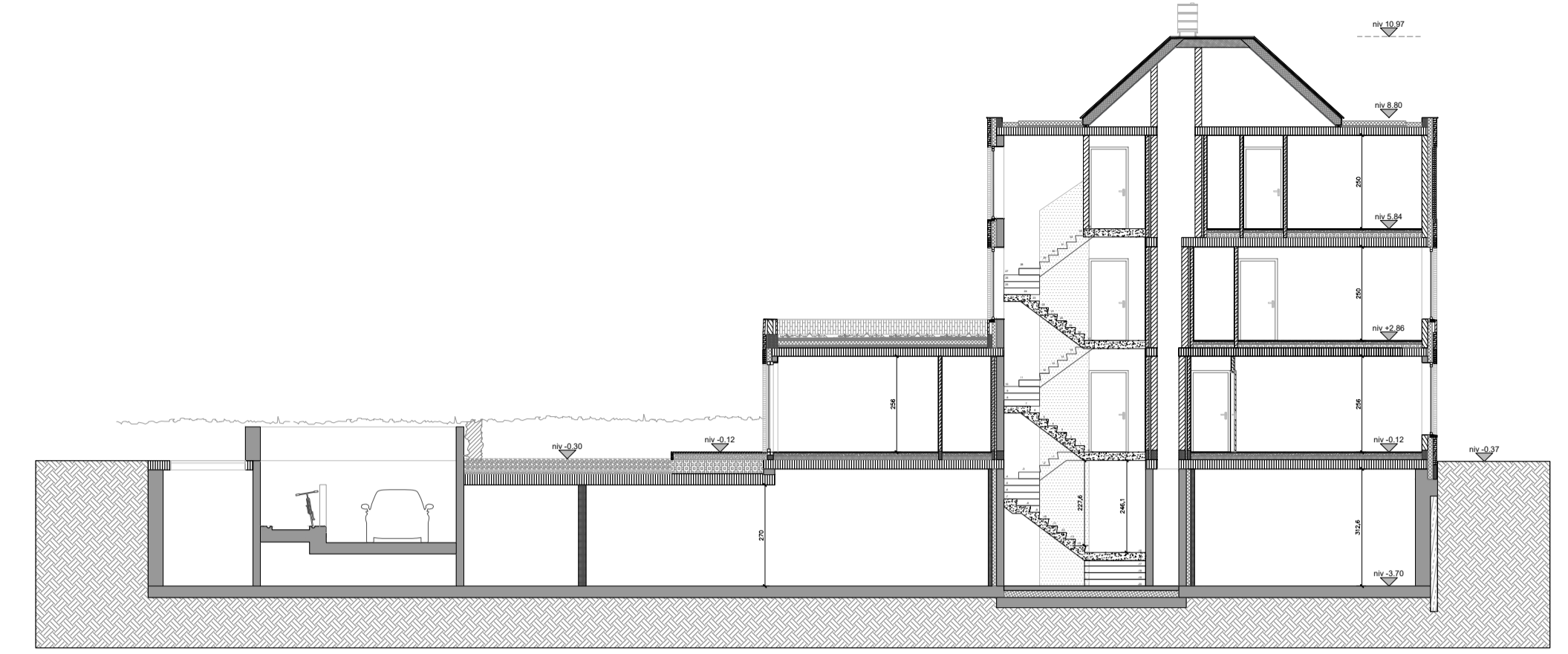


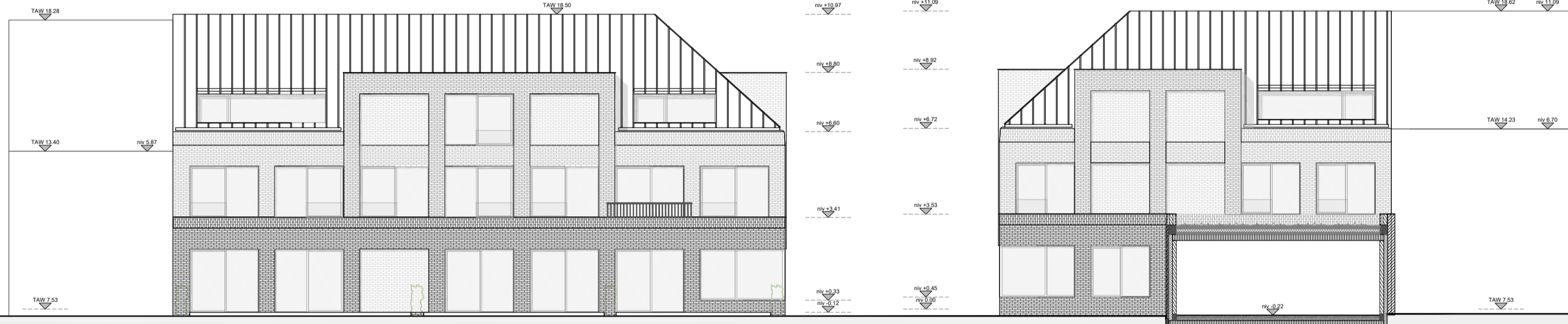
Straatgevel
Zuid



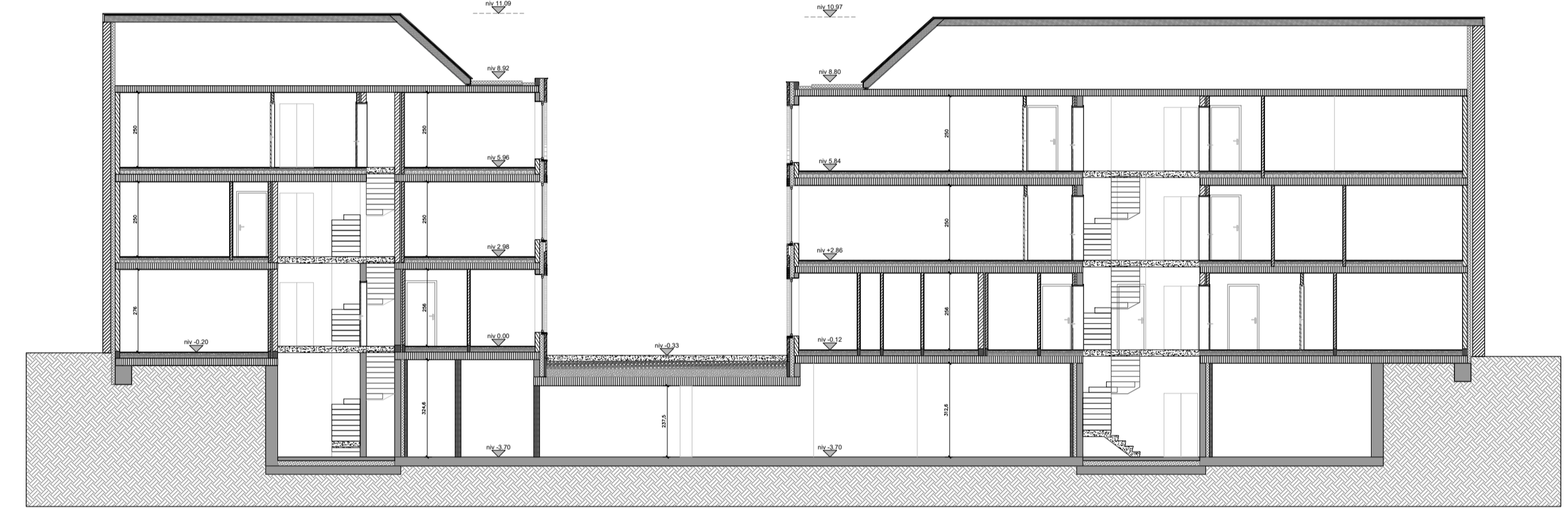
Snede
AA'



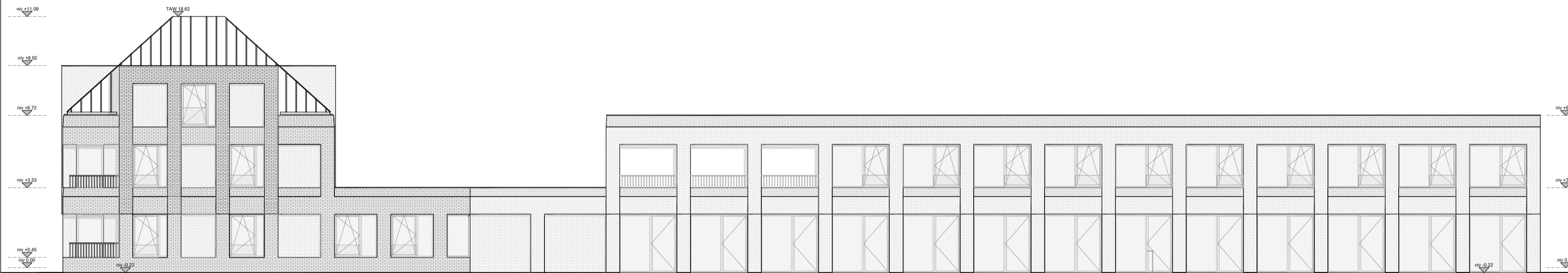
Achtergevel
Noord



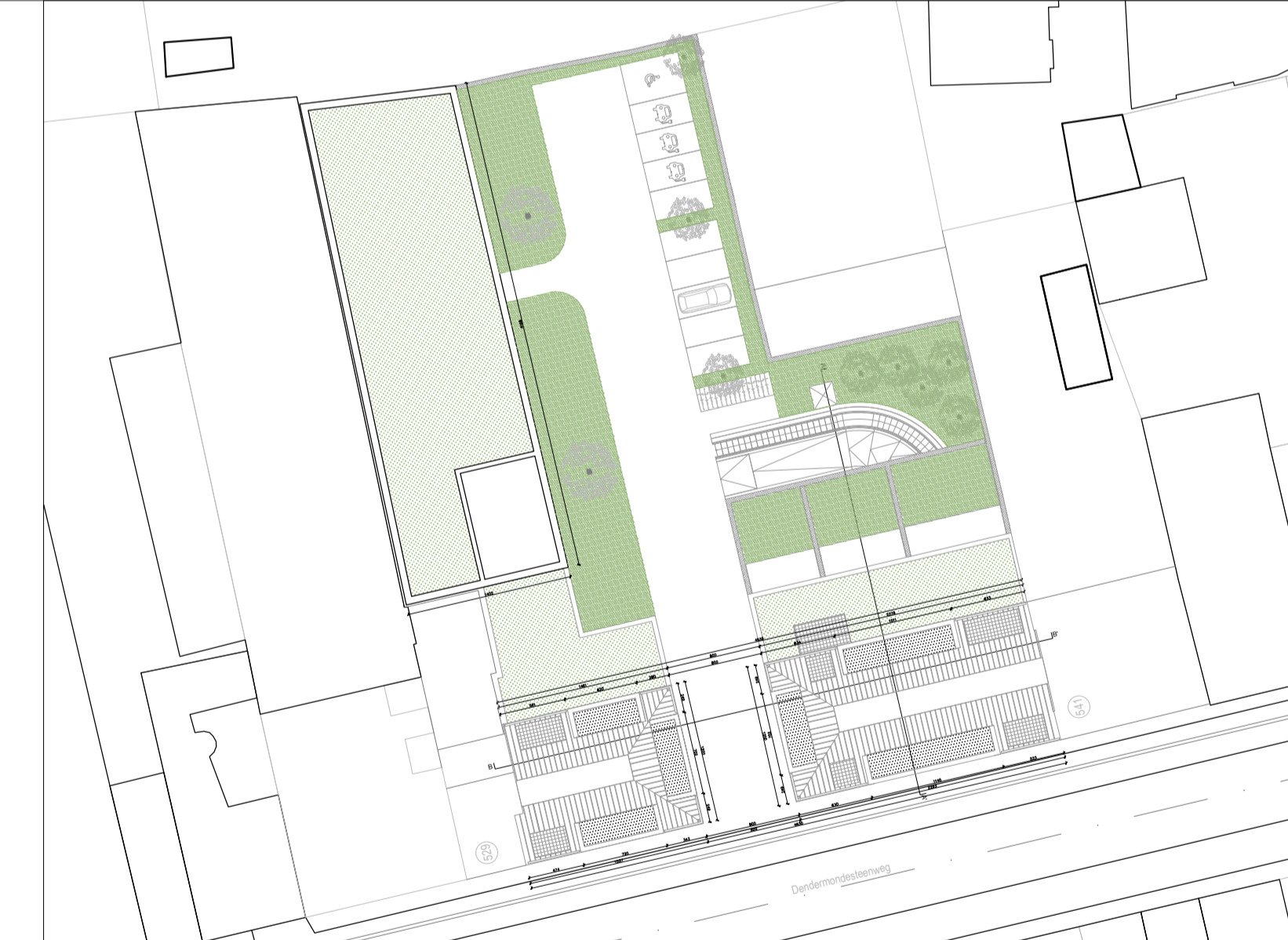
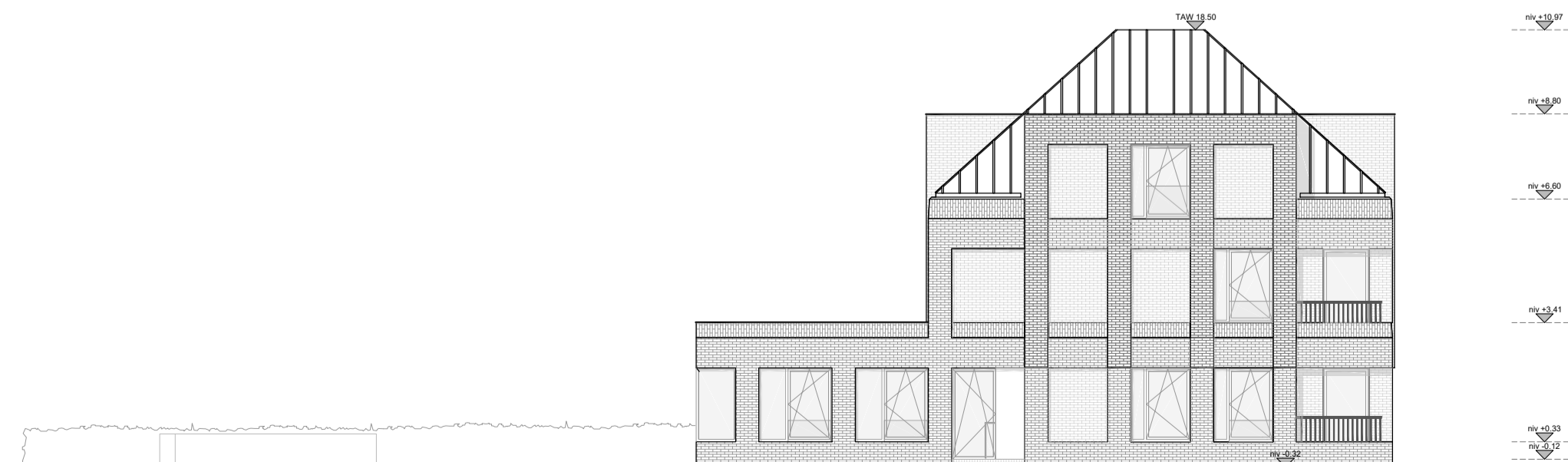
Snede
BB'



Zijgevel
Oost



Zijgevel
West



WES

WE-S architecten bvba
Edmond Blockstraat 9
B-9050 GENT
T +32 9 279 89 76
E info@we-s.be

Bouwplaats:

Dendermondsesteenweg 535 - 537
9070 Destelbergen

Bouwheer:

Builthings

Ontwerp: 12 appartementen + kantoren

Datum: 06 06 2022

Plan: Gevels en Snedes

Schaal: 1/150

DENDERMONDSESTEENWEG

Goedgekeurd en voor akkoord ondertekend:
Bouwheer

Architect